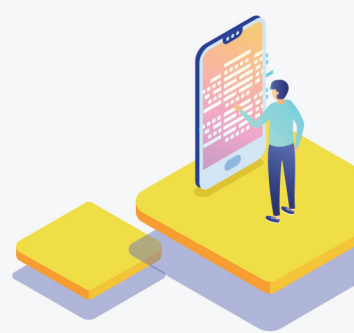




2019 BK21^{PLUS} International Symposium

Health and Care in Aging Asian Cities: Can Big Data and Technology Help?



| **Date** | 13:00~18:00, 30 October (Wed.), 2019

| **Place** | Room 113, Graduate School of Public Health (Bldg. 221) Seoul National University

Time	Topic	Presenter
12:30-13:00	Registration	
13:00-13:10	Opening Remarks	Ho KIM (Dean, SNU) Youngtae CHO (BK Project Director, SNU)
Session I : Policy, Data, and Technology for Healthy Aging Cities (Chair : Youngtae CHO, SNU)		
13:10-14:50	Long-Term Care Insurance Pilots and Big Data Application in China	He CHEN (Peking University, China)
	Development of Quality Indicators in Long-Term Care in Japan : Aiming to Construct the High-Level Community-Based Integrated Care System	Ayumi IGARASHI (The University of Tokyo, Japan)
	Current Situation and Challenges of Health and Care in Thai Aging Cities	Thaworn SAKUNPHANIT (Ministry of Public Health, Thailand)
	Recent Health Policies for the Elderly and the Application of Big Data in Seoul, Korea	Changwoo SHON (The Seoul Institute, Korea)
14:50-15:10	Tea Break	
Session II : Services, Data, and Technology for Healthy Aging Cities (Chair : Hongsoo KIM, SNU)		
15:10-16:30	The Nation-Wide Implementation of interRAI in New Zealand and How We Use Big Data to Promote the Policy of Aging-in-Place	Brigette MEEHAN (interRAI New Zealand)
	The Application of interRAI Instruments and Big Data Across the Continuum of Care: Recent Developments in Hong Kong	Hao LUO (The University of Hong Kong, Hong Kong, China)
	Innovation of Home-Monitoring-Based Telenursing : The Evidence and Challenging for Health Policy Changes in Japanese Settings	Yuki NAKAYAMA (Tokyo Metropolitan Institute of Medical Science, Japan)
16:30-16:40	Tea Break	
Session III : Advances in Methods for Healthy Aging Research (Chair : Sungho WON, SNU)		
16:40-18:00	Qualitative GIS for Urban Health Promotion Research	Seunghyun YOO (SNU)
	Spatio-Temporal Epidemiology for Public Health Disasters	Seung-sik HWANG (SNU)
	ICT-Enhanced Integrated Care Management Model at Urban Nursing Homes : Development and a Randomized Control Trial	Hongsoo KIM (SNU)

Organizer: Training Center for the Convergent Application of Mobile Technology and Big Data Analysis in Public Health, Seoul National University (SNU), Republic of Korea

- ❖ 문의: 서울대학교 보건대학원 고령화보건정책·서비스 연구실 (Tel. 02-880-2750)
- ❖ 등록: 성명, 소속, 연락처를 적어 kypy19@snu.ac.kr로 신청 (등록비 없음)